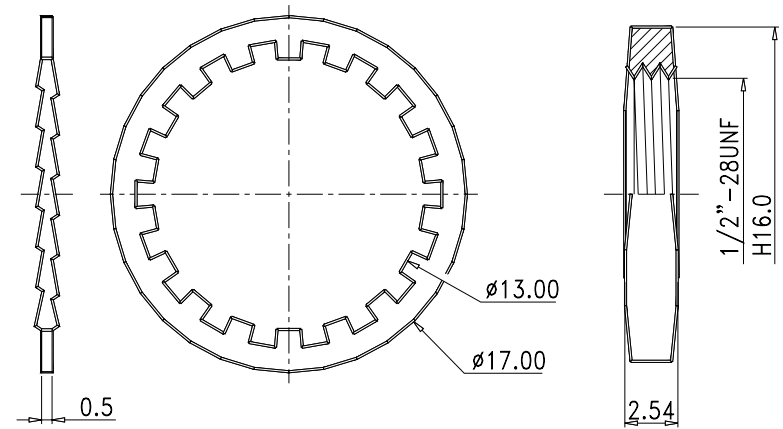
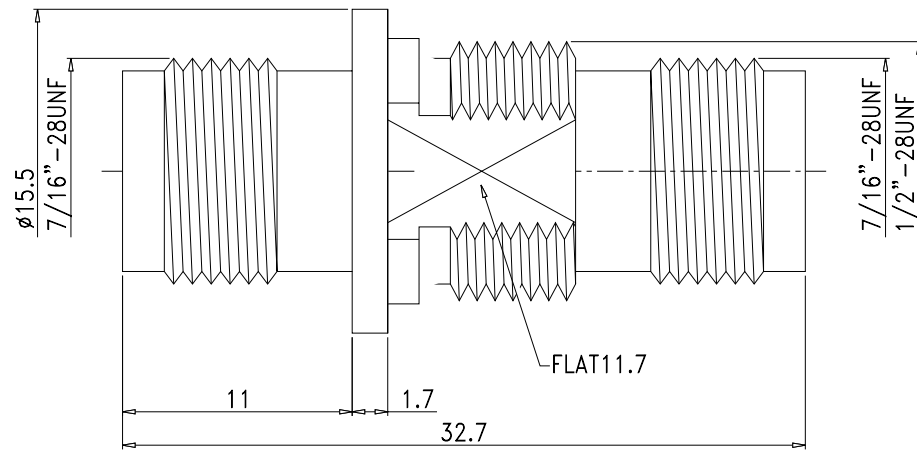


REVISION

REV	DATE	DESCRIPTION
△	9/01/20	INITIAL



6.	NUT	BRASS	1	NICKEL
5.	WASHER	BRASS	1	NICKEL
4.	INSULATION	DELRIN	2	NONE
3.	PIN	BRASS	1	GOLD
2.	BODY2	BRASS	2	NICKEL
1.	BODY1	BRASS	1	NICKEL
NO.	DESCRIPTION	MATERIAL	Q'TY	FINISH

UNITS	SCALE	SIZE	TOLERANCE	DRAWN BY:	CHECKED BY:	CAD FILE
[in] mm	NTS	A	.X +/- 0.2 .XX +/- 0.1 .XXX +/- 0.05 ANGLE +/- 0.5			15-34-DGN
SHEET 1 OF 1						

PROPRIETARY AND CONFIDENTIAL  
 THE INFORMATION IN THIS DRAWING IS THE SOLE PROPERTY OF TCC INDUSTRIES INC. ANY REPRODUCTION IN PARTS OR AS A WHOLE WITHOUT THE WRITTEN PERMISSION OF TCC INDUSTRIES INC. IS PROHIBITED.

DESCRIPTION
Adapter 2-port, Straight TNC, Jack/Female to TNC Jack/Female Bulkhead



**TCC INDUSTRIES INC.**  
 7050 Village Drive unit E, Buena Park, CA 90621-2282  
 Tel. 714.523.8885 - FAX. 714.562.0888  
 E-Mail: info@tccinc.com Website: www.tccinc.com